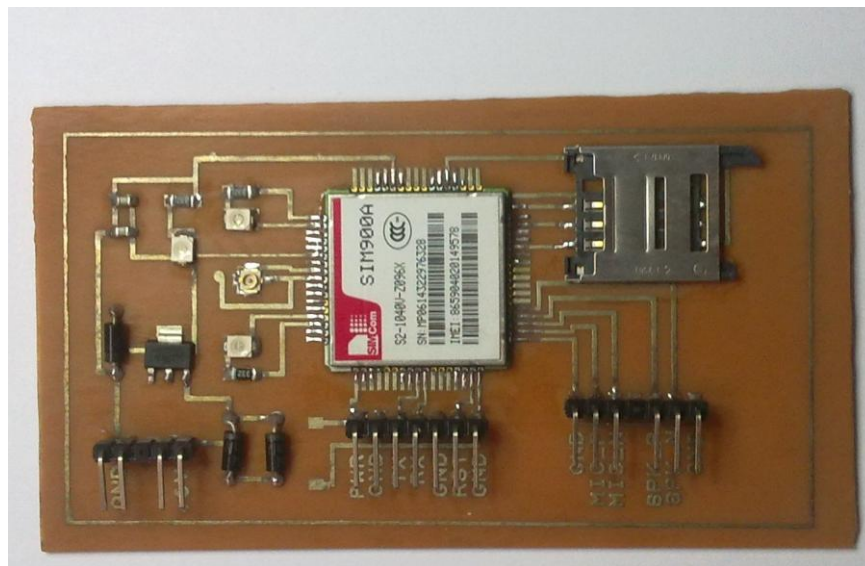


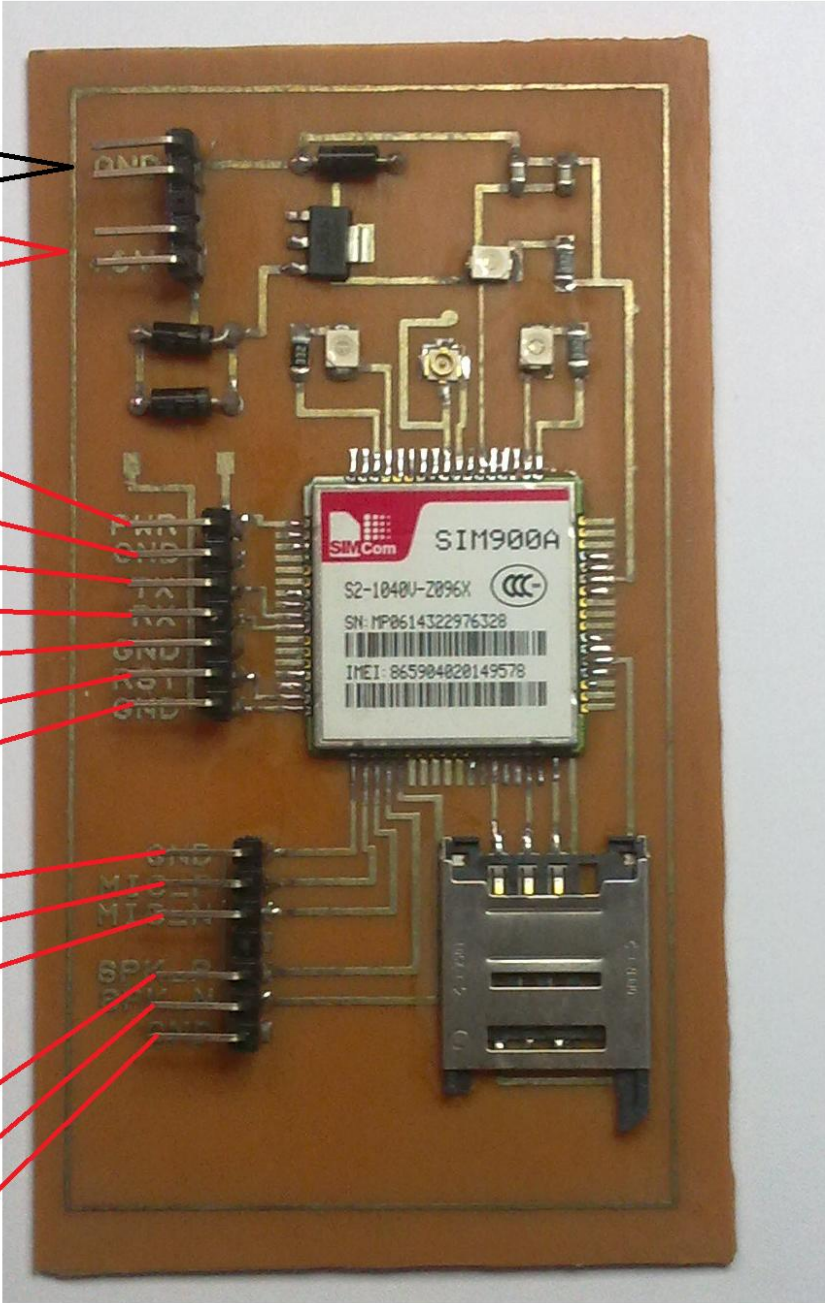
# Getting started with SIM900A module



**SIM900's AT command set is fully supported by SIM900A**

Pinout:

- GND
- +7.5 v
- POWER
- GND
- TX
- RX
- GND
- RESET
- GND
- GND
- MIC\_P
- MIC\_N
- SPEAKER\_R
- SPEAKER\_N
- GND



## Features of SIM900A:

- Dual-Band 900/ 1900 MHz
- GPRS multi-slot class 10/8GPRS mobile station class B
- Compliant to GSM phase 2/2+Class 4 (2 W @850/ 900 MHz)
- Class 1 (1 W @ 1800/1900MHz)
- Control via AT commands (GSM 07.07 ,07.05 and SIMCOM enhanced AT Commands)
- Low power consumption: 1.5mA(sleep mode)
- Operation temperature: -40°C to +85 °C

for more info:

<http://wm.sim.com/producten.aspx?id=1019>

- The default baud rate is 115200.
- Connect **PWR & GND momentarily to power up** the module.
- Min input voltage 6V. Recommended operating voltage 7.5V.
- If the module goes out of power after couple of seconds after power up then check your power source.
- Basic AT commands:
  - AT (expected output OK)
  - AT+CPIN? (expected output +CPIN:READY)
  - AT+CREG? (expected output +CREG:0,1)

# The module in operation:

